

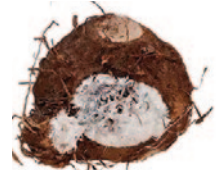


## Top 6 Heart to Heart™ Caladiums for 2021

As bold foliage plants continue to trend strongly, now is the time to expand your offerings of versatile tropicals like our new Heart to Heart™ caladiums. With varieties that can withstand every setting – from full sun to full shade in blazing heat – these bold foliage thrillers bring a tropical vibe to upright container recipes, hanging baskets and in-ground plantings. Growers will appreciate that all caladium bulbs we offer come de-eyed and painted, making it easy to grow predictably strong crops every time.

### Growing tips:

- For ease of planting, the top of the bulb has been identified with white paint. Plant this side up!
- For optimal sprouting times, grow above 70° F with 50%+ humidity when possible.
- Tubers typically sprout within 14-21 days.
- Growing and finishing temperatures must be above 70° F. Avoid chilling temps of 60° F and below.
- Apply liquid feed at 75-100ppm N or use a 90-day controlled release fertilizer.



1. Heart to Heart™ 'White Wonder'  
Sun or Shade



2. Heart to Heart™ 'Rose Glow'  
Sun or Shade



3. Heart to Heart™ 'Blushing Bride'  
Sun or Shade



4. Heart to Heart™ 'Scarlet Flame'  
Sun or Shade



5. Heart to Heart™ 'Raspberry Moon'  
Sun or Shade



6. Heart to Heart™ 'Fast Flash'  
Sun or Shade

